

Yeelight WiFi Light Inter-Operation Specification

www.yeelink.com

| | | | |
|---------------|------------|--------------------|----------------------------|
| Initial Draft | 2016/01/22 | weiwei@yeelink.net | |
| Version 1.0 | 2016/02/01 | weiwei@yeelink.net | Add HSV support |
| Version 1.1 | 2016/02/15 | weiwei@yeelink.net | Fix typo and format issue |
| Version 1.2 | 2016/03/25 | weiwei@yeelink.net | Add set_adjust interface |
| Version 1.3 | 2016/05/26 | weiwei@yeelink.net | Fix typo and format |
| Version 1.4 | 2016/05/31 | weiwei@yeelink.net | Add “flow_params” property |
| Version 1.5 | 2016/07/11 | weiwei@yeelink.net | Add music mode support |

Table of contents

| | | |
|-----|---------------------------------------|----|
| 1 | Introduction | 2 |
| 2 | Overview | 2 |
| 3 | Local Discovery | 3 |
| 3.1 | Search request and response | 4 |
| 3.2 | Advertisement..... | 6 |
| 4 | Control Protocol | 8 |
| 4.1 | COMMAND message | 8 |
| 4.2 | RESULT message..... | 16 |
| 4.3 | NOTIFICATION message..... | 17 |
| 5 | Issues and Future consideration | 18 |
| 6 | Reference | 18 |

1 Introduction

Yeelight smart LED products support remote control through WiFi. When user received the smart LED device for the first time, he/she needs to complete a configuration procedure to provision the router's SSID and password to the device. This procedure is normally called SmartConfig or QuickConnect. Due to security consideration, the protocol used for SmartConfig is proprietary, which means no 3rd party could know about it or use it. However, after the device is connected to the router, it can be seen by all the devices under the same network, thus could also be controlled by 3rd party equipment that understands the inter-operation control protocol.

The purpose of this document is to help 3rd party equipment vendors that want to work with Yeelight smart devices or users who are willing to play with the device with their own softwares to understand the technical details of discovering and controlling of the device .

2 Overview

Currently, Yeelight WiFi LED is controlled through cloud. The command will be sent to a cloud server and then forwarded to the device.

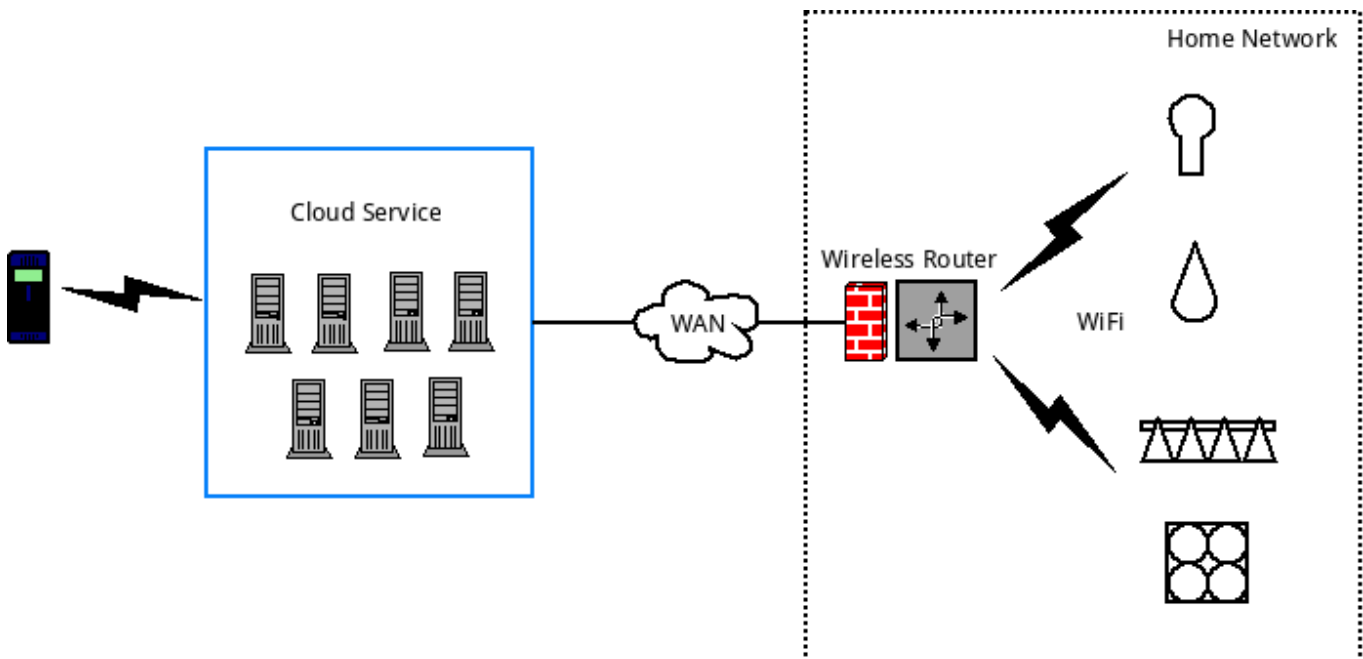


Figure 2-1

As Figure 2-1 shows, all the WiFi LEDs are keep in touch with cloud server. If the cloud server is down or the WAN network undergoes some issue, then user will lose control of the

device. Therefore we think local control is very necessary and begin to work on the local control mechanism.

Local control can be further divided into two parts: the discovery procedure and the control procedure. For local discovery, we used a SSDP like protocol but it's greatly simplified. For control protocol, we define a set of control commands that expressed in JSON. The two parts will be explained in great detail in section 3 and 4.

3 Local Discovery

As SSDP defined, there are actually two kinds of discover message: searching and advertising messages. Searching is used by device that wants to find other devices or services that it has interests while advertising is used by any device that is willing to announce it's presence on the network.

Yeelight smart LED supports both kinds of message. It will listen on a multi-cast address, waiting for any incoming search requests. If the request is targeted for Yeelight smart LED (ST header contains Yeelight pre-defined value), then the device will uni-cast a response to the searcher. The response contains some basic information about the device, e.g. IP and port of the control service, current power status, current brightness as well as all the supported control methods. So when the searcher received the response, it can get the basic idea of the device. With these information, it can do further contact and control. The advertising message is sent by Yeelight smart LED after it joined the network or after a fixed period of time (this is to refresh it's state). The message is sent to a multi-cast address with some basic information. The receiver of the message should not respond to the advertisement.

Figure 3-1 shows the discover procedure.

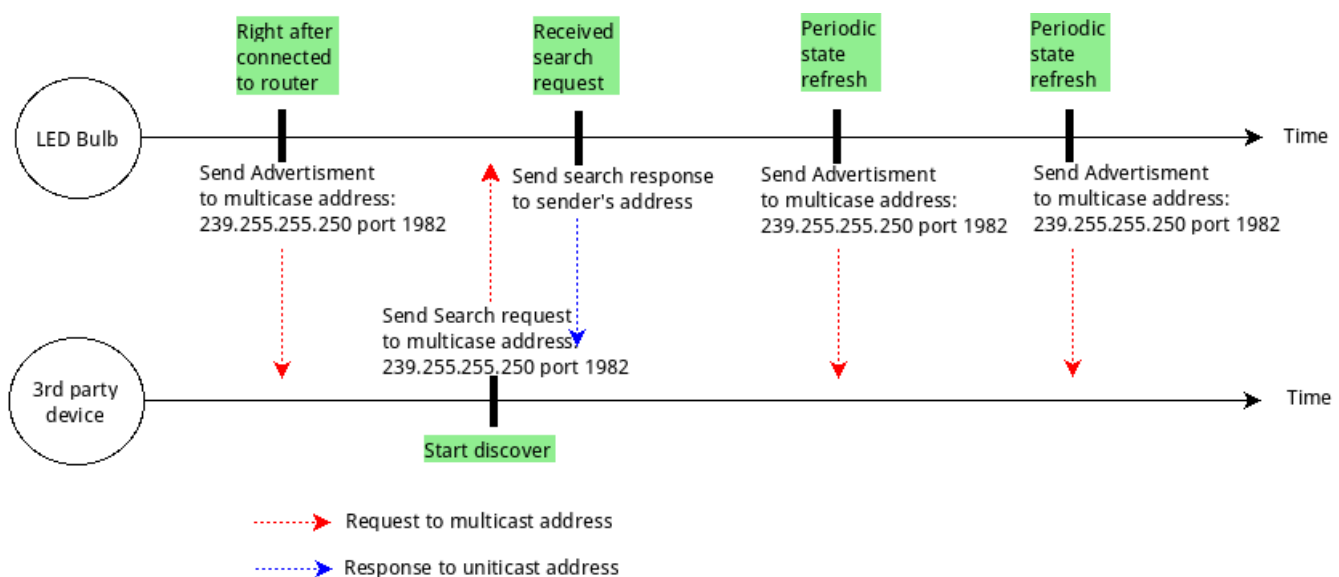


Figure 3-1

Different from SSDP protocol, we choose to send multi-cast messages to port **1982** instead of standard SSDP port 1900. This is to avoid excessive multi-cast messages being received by both smart LED and 3rd party devices. It's especially important if the 3rd party device is power-consumption-sensitive (e.g. smart watch powered by battery).

3.1 Search request and response

The searching message generated by 3rd device should follow below format and rules and being sent to multi-cast address **239.255.255.250:1982** over UDP.

```
-----  
M-SEARCH * HTTP/1.1  
HOST: 239.255.255.250:1982  
MAN: "ssdp:discover"  
ST: wifi_bulb  
-----
```

1. The start line must be "**M-SEARCH * HTTP/1.1**" without any leading LWP.
2. "HOST" header is optional, if it's present, the value should be "**239.255.255.250:1982**".
3. "MAN" header is required. The value for "MAN" header must be "**ssdp:discover**", double quotes included.
4. "ST" header is required. The value for "ST" header must be "**wifi_bulb**".
5. The headers are case-insensitive while the start line and all the header values are case sensitive. Each line should be terminated by "**\r\n**".

Any messages that doesn't follow above rules will be silently dropped, which means the searching device won't be able to find any Yeelight smart LED. If the message is deemed as a valid request, the response message will be generated by Yeelight smart LED and uni-casted to request sender's sending IP and port. For instance, if the request is sent by 192.168.1.22 on UDP port 43210, then response will be sent to 192.168.1.22:43210. The response will be in following format.

```
-----  
HTTP/1.1 200 OK  
Cache-Control: max-age=3600  
Date:  
Ext:  
Location: yeelight://192.168.1.239:55443  
Server: POSIX UPnP/1.0 YGLC/1  
id: 0x0000000000015243f  
model: color  
fw_ver: 18  
support: get_prop set_default set_power toggle set_bright start_cf stop_cf set_scene  
cron_add cron_get cron_del set_ct_abx set_rgb  
-----
```

```
power: on  
bright: 100  
color_mode: 2  
ct: 4000  
rgb: 16711680  
hue: 100  
sat: 35  
-----
```

The start line will always be "**HTTP/1.1 200 OK**".

"CACHE-CONTROL" field contains the status refresh interval. Smart LED will send another advertisement message after that amount of seconds.

"LOCATION" field contains the service access point of the smart LED device. The URI scheme will always be "yeelight", host is the IP address of smart LED, port is control service's TCP listen port.

"DATE", **"EXT"** and **"SERVER"** header doesn't contain any important information, it's there just to confirm with SSDP.

All other headers are Yeelight specific.

"ID": The ID of a Yeelight WiFi LED device, 3rd party device should use this value to uniquely identified a Yeelight WiFi LED device.

"MODEL": The product model of a Yeelight smart device. Current it can be "mono", "color", "stripe". For "mono", it represents device that only supports brightness adjustment. For "color", it represents device that support both color and color temperature adjustment. "Stripe" stands for Yeelight smart LED stripe. More values may be added in future.

"FW_VER": LED device's firmware version.

"SUPPORT": All the supported control methods separated by white space. 3rd party device can use this field to dynamically render the control view to user if necessary. Any control request that invokes method that is not included in this field will be rejected by smart LED.

"POWER": Current status of the device. "on" means the device is currently turned on, "off" means it's turned off (not un-powered, just software-managed off).

"BRIGHT": Current brightness, it's the percentage of maximum brightness. The range of this value is 1 ~ 100.

"COLOR_MODE": Current light mode. 1 means color mode, 2 means color temperature mode, 3 means HSV mode.

"CT": Current color temperature value. The range of this value depends on product model, refer to Yeelight product description. This field is only valid if COLOR_MODE is 2.

"RGB": Current RGB value. The field is only valid if COLOR_MODE is 1. The value will be explained in next section.

"HUE": Current hue value. The range of this value is 0 to 359. This field is only valid if COLOR_MODE is 3.

"SAT": Current saturation value. The range of this value is 0 to 100. The field is only valid if COLOR_MODE is 3.

NOTE: HUE and SAT should be used in combination. CT mode, RGB mode and HSV mode are mutually exclusively.

After 3rd party device received the response, it's recommended to do following operations:

1. Parses and validate the response message.
2. Identify the device, check if the device is already maintained in local storage by searching local database by ID.
3. Display the status to user if necessary.
4. Follow the information in "LOCATION" header to establish a TCP connection with the WiFi smart LED.
5. After the TCP connection is successfully established, send control message to control the smart LED or monitor the status change of the device and display any change to user.

3.2 Advertisement

Right after Yeelight smart LED joined the local network, it will announce its presence by multi-casting a advertisement requests. The purpose of this message is to notify 3rd party devices that smart LED is online and ready to serve control request. Without this advertisement message, 3rd party devices would have to probe the network from time to time in order to achieve PnP (plug and play), which is obviously power-consuming and inefficient.

After the initial announcement, Yeelight smart LED will refresh its state by sending the advertisement message at a fixed interval. The format of the advertisement message is:

```
-----  
NOTIFY * HTTP/1.1  
Host: 239.255.255.250:1982  
Cache-Control: max-age=3600
```

```
Location: yeelight://192.168.1.239:55443
NTS: ssdp:alive
Server: POSIX, UPnP/1.0 YGLC/1
id: 0x000000000015243f
model: color
fw_ver: 18
support: get_prop set_default set_power toggle set_bright start_cf stop_cf set_scene
cron_add cron_get cron_del set_ct_abx set_rgb
power: on
bright: 100
color_mode: 2
ct: 4000
rgb: 16711680
hue: 100
sat: 35
-----
```

The start line will always be "**NOTIFY * HTTP/1.1**".

"**NTS**" header's value will always be "ssdp:alive".

"**CACHE-CONTROL**" field contains the status refresh interval. Smart LED will send another advertisement message after that amount of seconds.

"**LOCATION**" field contains the service access point of the smart LED. The URI scheme will always be "yeelight", host is the IP address of smart LED, port is control service's TCP listen port.

All Yeelight specific headers are exactly same as those in search response message. (See section 3.1)

After 3rd party device received the advertisement, it's recommended to do following operations:

1. Parses and validate the response message.
2. Identify the device, check if the device is already maintained in local storage by searching local database by ID.
3. If the device is already in local storage, refresh its state and display to user.
4. If the device is not found in local storage, present the new device to user.
5. Follow the information in "LOCATION" header to establish a TCP connection with the WiFi smart LED.
6. After the TCP connection is successfully established, send control message to control the device or monitor the status change of the device and display any change to user.

4 Control Protocol

When the local discovery procedure is completed, a control plane could be established between 3rd party devices and smart LEDs, which from then on will be used to carry control protocol messages that are encoded in JSON format.

Yeelight smart LED control protocol defined 3 types of messages: COMMAND message, RESULT message and NOTIFICATION message. All messages must be delivered in defined JSON format on a TCP connection and each individual message must be terminated by "`\r\n`". If user could know the IP of the smart LED, then he/she can simply use "telnet" to establish the control channel (telnet <IP> 55443) and then send and receive any control commands. This is helpful for debugging and trouble shooting during development.

NOTE: Currently WiFi smart device support up to 4 simultaneous TCP connections, any further connect attempt will be rejected. For each connection, there is a command message quota, that is 60 commands per minute. There is also a total quota for all the LAN commands: 144 commands per minute ($4 \times 60 \times 60\%$).

4.1 COMMAND message

COMMAND message is generated by 3rd party devices and sent to smart LED. The format of the command is defined as below:

```
{ id_pair, method_pair, params_pair } \r\n
```

| Pair | Presence | String | Value |
|-------------|-----------|----------|--------------------|
| id_pair | mandatory | "id" | int(val) |
| method_pair | mandatory | "method" | string(method_val) |
| params_pair | mandatory | "params" | array(params_val) |

The value of "id" is an integer filled by message sender. It will be echoed back in RESULT message. This is to help request sender to correlate request and response.

The value of "method" is a string that specifies which control method the sender wants to invoke. The value must be chosen by sender from one of the methods that listed in "**SUPPORT**" header in advertisement request or search response message. Otherwise, the message will be rejected by smart LED.

The value of "params" is an array. The values in the array are method specific.

Example:

```
{ "id": 1, "method": "set_power", "params": ["on", "smooth", 500] }
```

Following is the list of all supported methods and parameters.

| Method value | Parameters Count | Param 1 | Param 2 | Param 3 | Param 4 |
|--------------|------------------|-----------------|----------------|-------------------------|---------------|
| get_prop | 1 ~ N | * | * | * | * |
| set_ct_abx | 3 | int(ct_value) | string(effect) | int(duration) | |
| set_rgb | 3 | int(rgb_value) | string(effect) | int(duration) | |
| set_hsv | 4 | int(hue) | int(sat) | string(effect) | int(duration) |
| set_bright | 3 | int(brightness) | string(effect) | int(duration) | |
| set_power | 3 | string(power) | string(effect) | int(duration) | |
| toggle | 0 | | | | |
| set_default | 0 | | | | |
| start_cf | 3 | int(count) | int(action) | string(flow_expression) | |
| stop_cf | 0 | | | | |
| set_scene | 3 ~ 4 | string(class) | int(val1) | int(val2) | * int(val3) |
| cron_add | 2 | int(type) | int(value) | | |
| cron_get | 1 | int(type) | | | |
| cron_del | 1 | int(type) | | | |
| set_adjust | 2 | string(action) | string(prop) | | |
| set_music | 1 ~ 3 | int(action) | string(host) | int(port) | |

Table 4-1

Detailed explanation for each method:

Method: get_prop
Usage: This method is used to retrieve current property of smart LED.
Parameters: 1 to N.
 The parameter is a list of property names and the response contains a list of corresponding property values. If the requested property name is not recognized by smart LED, then a empty string value ("") will be returned.
Request Example: {"id":1,"method":"get_prop","params":["power", "not_exist", "bright"]}
Response Example: {"id":1, "result":["on", "", "100"]}
NOTE: All the supported properties are defined in table 4-2, section 4.3

Method: set_ct_abx
Usage: This method is used to change the color temperature of a smart LED.
Parameters: 3.
 "ct_value" is the target color temperature. The type is integer and range is 1700 ~ 6500 (k).
 "effect" support two values: "sudden" and "smooth". If effect is "sudden", then the color temperature will be changed directly to target value, under this case, the third parameter "duration" is ignored. If effect is "smooth", then the color temperature will

be changed to target value in a gradual fashion, under this case, the total time of gradual change is specified in third parameter "duration".

"duration" specifies the total time of the gradual changing. The unit is milliseconds. The minimum support duration is 30 milliseconds.

Request Example: {"id":1,"method":"set_ct_abx","params":[3500, "smooth", 500]}

Response Example: {"id":1, "result":["ok"]}

NOTE: Only accepted if the smart LED is currently in "on" state.

Method: set_rgb

Usage: This method is used to change the color of a smart LED.

Parameters: 3.

"rgb_value" is the target color, whose type is integer. It should be expressed in decimal integer ranges from 0 to 16777215 (hex: 0xFFFFFF).

RGB color format & calculation

RGB code has 24 bits format (bits 0..23):

| RED[7:0] | | | | | | | | GREEN[7:0] | | | | | | | | BLUE[7:0] | | | | | | | | |
|----------|--|--|--|--|--|--|----|------------|--|--|--|--|--|--|---|-----------|--|--|--|--|--|--|--|---|
| 23 | | | | | | | 16 | 15 | | | | | | | 8 | 7 | | | | | | | | 0 |

RGB = (R*65536)+(G*256)+B , (when R is RED, G is GREEN and B is BLUE)

"effect": Refer to "set_ct_abx" method.

"duration": Refer to "set_ct_abx" method.

Request Example: {"id":1,"method":"set_rgb","params":[255, "smooth", 500]}

Response Example: {"id":1, "result":["ok"]}

NOTE: Only accepted if the smart LED is currently in "on" state.

Method: set_hsv

Usage: This method is used to change the color of a smart LED.

Parameters: 4.

"hue" is the target hue value, whose type is integer. It should be expressed in decimal integer ranges from 0 to 359.

"sat" is the target saturation value whose type is integer. It's range is 0 to 100.

"effect": Refer to "set_ct_abx" method.

"duration": Refer to "set_ct_abx" method.

Request Example: {"id":1,"method":"set_hsv","params":[255, 45, "smooth", 500]}

Response Example: {"id":1, "result":["ok"]}

NOTE: Only accepted if the smart LED is currently in "on" state.

Method: set_bright
Usage: This method is used to change the brightness of a smart LED.
Parameters: 3.
"brightness" is the target brightness. The type is integer and ranges from 1 to 100. The brightness is a percentage instead of a absolute value. 100 means maximum brightness while 1 means the minimum brightness.
"effect": Refer to "set_ct_abx" method.
"duration": Refer to "set_ct_abx" method.
Request Example: {"id":1,"method":"set_bright","params":[50, "smooth", 500]}
Response Example: {"id":1, "result":["ok"]}
NOTE: Only accepted if the smart LED is currently in "on" state.

Method: set_power
Usage: This method is used to switch on or off the smart LED (software managed on/off).
Parameters: 3.
"power" can only be "on" or "off". "on" means turn on the smart LED, "off" means turn off the smart LED.
"effect": Refer to "set_ct_abx" method.
"duration": Refer to "set_ct_abx" method.
Request Example: {"id":1,"method":"set_power","params":["on", "smooth", 500]}
Response Example: {"id":1, "result":["ok"]}
NOTE: N/A

Method: toggle
Usage: This method is used to toggle the smart LED.
Parameters: 0.
Request Example: {"id":1,"method":"toggle","params":[]}
Response Example: {"id":1, "result":["ok"]}
NOTE: This method is defined because sometimes user may just want to flip the state without knowing the current state.

Method: set_default

Usage: This method is used to save current state of smart LED in persistent memory. So if user powers off and then powers on the smart LED again (hard power reset), the smart LED will show last saved state.

Parameters: 0.

Request Example: {"id":1,"method":"set_default","params":[]}

Response Example: {"id":1,"result":["ok"]}

NOTE: For example, if user likes the current color (red) and brightness (50%) and want to make this state as a default initial state (every time the smart LED is powered), then he can use set_default to do a snapshot.

Only accepted if the smart LED is currently in "on" state.

Method: start_cf

Usage: This method is used to start a color flow. Color flow is a series of smart LED visible state changing. It can be brightness changing, color changing or color temperature changing.

Parameters: 3.

"count" is the total number of visible state changing before color flow stopped. 0 means infinite loop on the state changing.

"action" is the action taken after the flow is stopped.

0 means smart LED recover to the state before the color flow started.

1 means smart LED stay at the state when the flow is stopped.

2 means turn off the smart LED after the flow is stopped.

"flow_expression" is the expression of the state changing series.

Request Example: {"id":1,"method":"start_cf","params":[4, 2, "1000, 2, 2700, 100, 500, 1, 255, 10, 500, 2, 5000, 1"]}

Response Example: {"id":1,"result":["ok"]}

NOTE: Each visible state changing is defined to be a flow tuple that contains 4 elements: [duration, color_mode, value, brightness]. A flow expression is a series of flow tuples. So for above request example, it means: change CT to 2700K & maximum brightness gradually in 1000ms, then change color to red & 10% brightness gradually in 500ms, then change CT to 5000K & minimum brightness gradually in 500ms and then change CT to 2700K & maximum brightness gradually in 1000ms. After 4 changes reached, stopped the flow and power off the smart LED.

Only accepted if the smart LED is currently in "on" state.

The logic can be expressed in following pseudo code.

```
+start_cf:
  cnt = 0
  while true:
    if flow_cnt != 0 and cnt >= flow_cnt:
      take_stop_action(flow_action)
      break
```

```
tuple = get_next_flow_tuple()      # flow tuple will be put in a circular list
apply_effect(tuple)
```

Method: stop_cf
Usage: This method is used to stop a running color flow.
Parameters: 0.
Request Example: {"id":1,"method":"stop_cf","params":[]}
Response Example: {"id":1,"result":["ok"]}
NOTE: N/A

Method: set_scene
Usage: This method is used to set the smart LED directly to specified state. If the smart LED is off, then it will turn on the smart LED firstly and then apply the specified command.
Parameters: 3 ~ 4.
"class" can be "color", "hsv", "ct", "cf", "auto_dealy_off".
 "color" means change the smart LED to specified color and brightness.
 "hsv" means change the smart LED to specified color and brightness.
 "ct" means change the smart LED to specified ct and brightness.
 "cf" means start a color flow in specified fashion.
 "auto_delay_off" means turn on the smart LED to specified brightness and start a sleep timer to turn off the light after the specified minutes.
"val1", "val2", "val3" are class specific.

Request Example: {"id":1,"method":"set_scene", "params": ["color", 65280, 70]}
 {"id":1,"method":"set_scene", "params": ["hsv", 300, 70, 100]}
 {"id":1,"method":"set_scene", "params": ["ct", 5400, 100]}
 {"id":1,
 "method":"set_scene", "params": ["cf", 0, 0, "500,1,255,100,1000,1,16776960,70"]}
 {"id":1, "method":"set_scene", "params": ["auto_delay_off", 50, 5]}

Response Example: {"id":1, "result": ["ok"]}

NOTE: Accepted on both "on" and "off" state.
 For above examples:
 The first is to set color to "652280" and 70% brightness.
 The second is to set color to Hue:300, Saturation:70 and max brightness.
 The third is set CT to 500K and 100% brightness.
 The forth one is to start a infinite color flow on two flow tuples.

The fifth one is turn on the light to 50% brightness and then turn off after 5 minutes.

Method: cron_add

Usage: This method is used to start a timer job on the smart LED.

Parameters: 2.

"type" currently can only be 0. (means power off)

"value" is the length of the timer (in minutes).

Request Example: {"id":1,"method":"cron_add","params":[0, 15]}

Response Example: {"id":1, "result":["ok"]}

NOTE: For example, if a user wants to start a sleep timer (automatically turn off the smart LED after 20 minutes), then he can send a {"id":1,"method":"cron_add","params":[0, 20]}.

Only accepted if the smart LED is currently in "on" state.

Method: cron_get

Usage: This method is used to retrieve the setting of the current cron job of the specified type.

Parameters: 1.

"type" the type of the cron job. (currently only support 0).

Request Example: {"id":1,"method":"cron_get","params":[0]}

Response Example: {"id":1, "result":[{"type":0, "delay": 15, "mix":0}]}

NOTE: N/A

Method: cron_del

Usage: This method is used to stop the specified cron job.

Parameters: 1.

"type" the type of the cron job. (currently only support 0).

Request Example: {"id":1,"method":"cron_del","params":[0]}

Response Example: {"id":1, "result":["ok"]}

NOTE: N/A

Method: set_adjust

Usage: This method is used to change brightness, CT or color of a smart LED without knowing the current value, it's main used by controllers.

Parameters: 2.

- "action"** the direction of the adjustment. The valid value can be:
 - "increase"**: increase the specified property
 - "decrease"**: decrease the specified property
 - "circle"**: increase the specified property, after it reaches the max value, go back to minimum value.
- "prop"** the property to adjust. The valid value can be:
 - "bright"**: adjust brightness.
 - "ct"**: adjust color temperature.
 - "color"**: adjust color. (When **"prop"** is **"color"**, the **"action"** can only be **"circle"**, otherwise, it will be deemed as invalid request.)

Request Example: {"id":1,"method":"set_adjust","params":["increase","ct"]}

Response Example: {"id":1,"result":["ok"]}

NOTE: N/A

Method: set_adjust

Usage: This method is used to change brightness, CT or color of a smart LED without knowing the current value, it's main used by controllers.

Parameters: 2.

- "action"** the direction of the adjustment. The valid value can be:
 - "increase"**: increase the specified property
 - "decrease"**: decrease the specified property
 - "circle"**: increase the specified property, after it reaches the max value, go back to minimum value.
- "prop"** the property to adjust. The valid value can be:
 - "bright"**: adjust brightness.
 - "ct"**: adjust color temperature.
 - "color"**: adjust color. (When **"prop"** is **"color"**, the **"action"** can only be **"circle"**, otherwise, it will be deemed as invalid request.)

Request Example: {"id":1,"method":"set_adjust","params":["increase","ct"]}

Response Example: {"id":1,"result":["ok"]}

NOTE: N/A

Method: set_music

Usage: This method is used to start or stop music mode on a device. Under music mode, no property will be reported and no message quota is checked.

Parameters: 1 ~ 3.
"action" the action of set_music command. The valid value can be:
0: turn off music mode.
1: turn on music mode.
"host" the IP address of the music server.
"port" the TCP port music application is listening on.

Request Example: {"id":1,"method":"set_music","params":[1,"192.168.0.2",54321]}
{"id":1,"method":"set_music","params":[0]}

Response Example: {"id":1,"result":["ok"]}

NOTE: When control device wants to start music mode, it needs start a TCP server firstly and then call "set_music" command to let the device know the IP and Port of the TCP listen socket. After received the command, LED device will try to connect the specified peer address. If the TCP connection can be established successfully, then control device could send all supported commands through this channel without limit to simulate any music effect. The control device can stop music mode by explicitly send a stop command or just by closing the socket.

4.2 RESULT message

Result message is generated by smart LED upon receiving COMMAND messages. Every command message should expect a result message. It contains the result of the command execution or the value requested by command. The RESULT message will be in below format:

{ id_pair, result_pair } \r\n

| Pair | Presence | String | Value |
|-------------|-----------|-----------------------|----------------------------------|
| id_pair | mandatory | "id" | int(val) |
| result_pair | mandatory | "result" / "error" | array(value) or object(value) |

The value of "id" is an integer filled by smart LED. It is the mirror of "id" value in COMMAND message. This value should be mainly used by COMMAND sender to correlate request and response and it's meaningless to smart LED.

If command is successfully executed, the “result” will be returned and the value of it is an array. Depends on the command type, the array will contains either “ok” or the values of the requested properties (for get_xx command).

If command is failed, then “error” will be returned. The value of “error” is an object which contains the detailed error description.

For example, following are three possible kinds of RESULT messages.

Command "1" executed successfully.

```
{"id":1, "result":["ok"]}
```

Command "2" failed.

```
{"id":2, "error":{"code":-1, "message":"unsupported method"}}
```

Command “3” requested for current status {"id":3, "method":“get_prop”, “params”:[“power”, “bright”]}. The result will be:

```
{"id":3, "result":["on", "100"]}
```

4.3 NOTIFICATION message

Whenever there is state change of smart LED, it will send a notification message to all connected 3rd party devices. This is to make sure all 3rd party devices will get the latest state of the smart LED in time without having to poll the status from time to time.

The notification message will be in below format:

```
{ method_pair, params_pair }\r\n
```

| Pair | presence | String | Value |
|-------------|------------------|----------|--------------------|
| method_pair | mandatory | "method" | string(method_val) |
| params_pair | mandatory | "params" | object(prop_val) |

The value of params_pair is an object type and is in following format:

```
{ prop_val_pair1, prop_val_pair2, ... }
```

| Pair | presence | String | Value |
|---------------|------------------|---------------|------------------------|
| prop_val_pair | mandatory | Property name | string(Property value) |

The value of "method" currently can only be "props". If any other value is present, it should be deemed as an invalid notification.

The value of "params_pair" is an object. It contains a list of key-value pair. Note: all values are String type.

For example, if the smart LED is switched on to a 10% brightness, then it will send following notification messages.

```
{"method":"props","params":{"power":"on","bright","10"}}\r\n
```

Current support property and it's possible value is defined as below.

| Property Name | Possible value |
|---------------|---|
| power | on: smart LED is turned on / off: smart LED is turned off |
| bright | Brightness percentage. Range 1 ~ 100 |
| ct | Color temperature. Range 1700 ~ 6500(k) |
| rgb | Color. Range 1 ~ 16777215 |
| hue | Hue. Range 0 ~ 359 |
| sat | Saturation. Range 0 ~ 100 |
| color_mode | 1: rgb mode / 2: color temperature mode / 3: hsv mode |
| flowing | 0: no flow is running / 1: color flow is running |
| delayoff | The remaining time of a sleep timer. Range 1 ~ 60 (minutes) |
| flow_params | Current flow parameters (only meaningful when 'flowing' is 1) |
| music_on | 1: Music mode is on / 0: Music mode is off |

Table 4-2

5 Issues and Future consideration

This spec will be updated if there is any change of Yeelight local control protocol.

6 Reference

SSDP: <https://tools.ietf.org/html/draft-cai-ssdp-v1-03>

JSON: <http://www.json.org/>